



Signature Suites

St. James's Suite

A grand and luxurious Suite that features separate bedroom with King size Hypnos bed and comfortable natural polished stone bathroom. Its extremely spacious living room, offering panoramic views of London along with an elegant dining table, make it the perfect venue for sophisticated stays and family holidays.

Our St. James's Suite boasts 73sqm / 786sqf of space, it is accessible through private lift and complemented with carefully chosen art from the Rosenstein collection, separate walk-in shower, large desk, flat screen TVs, free Wi-Fi, minibar, safe and air conditioning. Its beautifully appointed living space has every comfort for impressive entertaining.

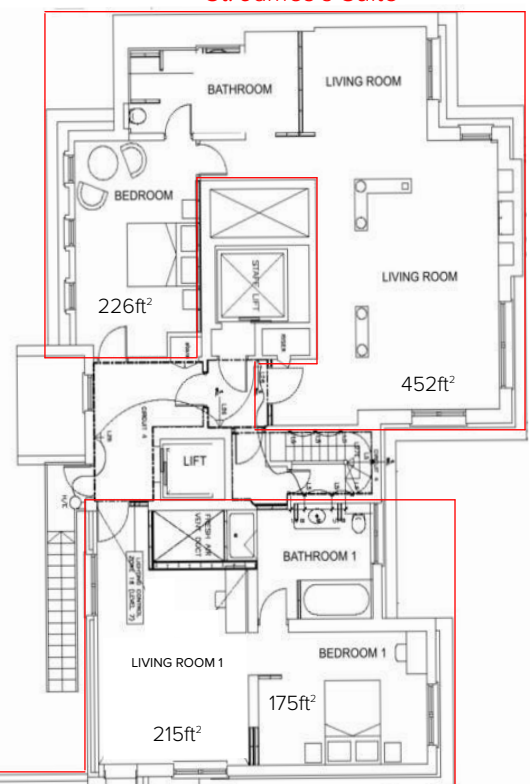


Westminster Suite

One of the jewels in the crown of the St. James's, with a large private rooftop terrace that measures 50sqm, separate living room and bedroom with King size Hypnos bed. The spacious natural polished stone bathroom has a bathtub and a separate walk-in shower. A perfect space to escape the everyday life with its spectacular views and art details.

Our Westminster Suite boasts 97sqm / 1044sqf of space and it is accessible through private lift. Stunning views are afforded by this luxurious Suite from its intimate terrace and a dedicated working area is included in the graceful lounge. Inevitably finished with complimentary Wi-Fi, air conditioning, minibar, safe and flat screen TVs, this Suite is carefully curated from a design perspective.

St. James's Suite



Westminster Suite

